

Supplementary Information

Resolving taxonomic ambiguities in extant Himalayan lazy toads: A new species of the genus *Scutiger* (Anura, Megophryidae) from eastern Nepal

Sylvia Hofmann, Annemarie Ohler, Chitra B. Baniya, Alain Dubois, Morris Flecks, Daniel Jablonski, Joachim Schmidt, Christophe Dufresnes

Supplementary file 1A. List of *Scutigera khumbu* **sp. nov.** specimens used in this study for morphological analysis. §Holotype: *Scutigera khumbu* **sp. nov.**, nominotypical subspecies (nom. subsp.) (ZFMK104174) and *Scutigera khumbu makalu* **subsp. nov.** (MNHN2003.3041); *paratype. Specimens for which molecular data have been collected are indicated by italicized IDs. MNHN: Muséum national d'Histoire naturelle, Paris, France; NHME: Natural History Museum Erfurt, Germany; 1: male, 2: female. a: adult; sa: subadult (the subadult specimen was excluded from statistical analysis).

Source	ID	<i>Scutigera</i> species	locality	lat	long	age	sex
ZFMK	104174§	<i>khumbu</i> sp. nov. , nom. subsp.	Nepal, Dolakha district, Jiri	27.70	86.28	a	1
MNHN	1977.1246*	<i>khumbu</i> sp. nov. , nom. subsp.	Nepal, Najing [Najing Dingma]	27.58	86.80	a	1
MNHN	1977.1247*	<i>khumbu</i> sp. nov. , nom. subsp.	Nepal, Najing [Najing Dingma]	27.58	86.80	a	1
MNHN	1977.1248*	<i>khumbu</i> sp. nov. , nom. subsp.	Nepal, Najing [Najing Dingma]	27.58	86.80	a	1
MNHN	1977.1249*	<i>khumbu</i> sp. nov. , nom. subsp.	Nepal, Najing [Najing Dingma]	27.58	86.80	a	1
MNHN	1977.1250*	<i>khumbu</i> sp. nov. , nom. subsp.	Nepal, Najing [Najing Dingma]	27.58	86.80	a	1
MNHN	1977.1251*	<i>khumbu</i> sp. nov. , nom. subsp.	Nepal, Najing [Najing Dingma]	27.58	86.80	a	2
MNHN	1977.1252*	<i>khumbu</i> sp. nov. , nom. subsp.	Nepal, Najing [Najing Dingma]	27.58	86.80	a	1
MNHN	1977.1253*	<i>khumbu</i> sp. nov. , nom. subsp.	Nepal, Najing [Najing Dingma]	27.58	86.80	a	2
MNHN	1977.1254*	<i>khumbu</i> sp. nov. , nom. subsp.	Nepal, Najing [Najing Dingma]	27.58	86.80	a	1
MNHN	1977.1255*	<i>khumbu</i> sp. nov. , nom. subsp.	Nepal, Najing [Najing Dingma]	27.58	86.80	a	2
MNHN	1977.1256*	<i>khumbu</i> sp. nov. , nom. subsp.	Nepal, Najing [Najing Dingma]	27.58	86.80	a	1
MNHN	1977.1257*	<i>khumbu</i> sp. nov. , nom. subsp.	Nepal, Najing [Najing Dingma]	27.58	86.80	a	1
MNHN	1977.1258*	<i>khumbu</i> sp. nov. , nom. subsp.	Nepal, Najing [Najing Dingma]	27.58	86.80	a	1
MNHN	1977.1259*	<i>khumbu</i> sp. nov. , nom. subsp.	Nepal, Najing [Najing Dingma]	27.58	86.80	a	1
MNHN	1977.1260*	<i>khumbu</i> sp. nov. , nom. subsp.	Nepal, Najing [Najing Dingma]	27.58	86.80	a	1
MNHN	1977.1261*	<i>khumbu</i> sp. nov. , nom. subsp.	Nepal, Najing [Najing Dingma]	27.58	86.80	a	1
MNHN	1977.1262*	<i>khumbu</i> sp. nov. , nom. subsp.	Nepal, Najing [Najing Dingma]	27.58	86.80	a	2
ZFMK	104175*	<i>khumbu</i> sp. nov. , nom. subsp.	Nepal, Dolakha district, Jiri	27.70	86.28	sa	
MNHN	2003.3041§	<i>k. makalu</i> subsp. nov.	Nepal, Salpa Pokhari	27.45	86.93	a	1
MNHN	2003.3042*	<i>k. makalu</i> subsp. nov.	Nepal, Salpa Pokhari	27.45	86.93	a	1

Supplementary file 1B. List of samples used in this study for phylogenetic reconstruction. Accession numbers of sequences generated in this study are indicated by grey cells. §Holotype; *paratype; #barcoded only; nominotypical subspecies = nom. subsp.

<i>Scutigera</i> species	Voucher/sample	Locality	Lat	Long	Alt	16S	col	cytb
<i>bhutanensis</i>	NHMB9146	Bhutan	27°24'	90°08'		PP344605	PP355376	–
<i>boulengeri</i>	KQ16_14	China, Sichuan	30°22'	101°40'	4062	KY310759	KY310869	KY310921
<i>boulengeri</i>	A1_AL	China, Tibet	29°36'	85°44'	5067	KY310760	KY310870	KY310922
<i>boulengeri</i>	A2_AL	China, Tibet	29°36'	85°44'	5067	KY310761	KY310871	KY310923
<i>boulengeri</i>	JS1507_C1	China, Tibet	30°19'	91°31'	4400	KY310765	KY310875	KY310927
<i>boulengeri</i>	JS1507_C2	China, Tibet	30°19'	91°31'	4400	KY310766	KY310876	KY310928
<i>boulengeri</i>	JS1507_A01	China, Tibet	30°36'	91°30'	4650	PP344606	PP355377	PP349710
<i>boulengeri</i>	XM1091	China, Tibet, Nyingchi	29°40'	94°42'	3850	KY310767	–	KY310929
<i>chintingensis</i>	KIZYXP36715					–	MW021352	MW133414
<i>chintingensis</i>	KIZYXP36716					–	MW021353	MW133415
<i>chintingensis</i>	LC141_01_6/01_9	China, Sichuan, Tianquan	30°14'	102°30'	2500	KY310769	KY310878	KY310930
<i>feiliangi</i>	SYAUBAA000040	China, Henan, Luoyang	34°41'	112°26'		–	OR263444	OR257694
<i>feiliangi</i>	SYAUBAA000041	China, Henan, Luoyang	34°41'	112°26'		–	OR263445	OR257695
<i>ghunsa</i>	JRK2015_193	Nepal, Taplejung, Ghunsa	27°39'	87°56'	3740	–	MK970591	MK970614
<i>ghunsa</i>	JRK2015_199	Nepal, Taplejung, Ghunsa	27°39'	87°56'	3740	–	MK970597	MK970620
<i>glandulatus</i>	2014_Sc1	China, Sichuan, Garzê	31°40'	99°43'	3457	KY310770	KY310879	KY310931
<i>glandulatus</i>	SH150557	China, Sichuan, Garzê	29°47'	100°25'	3713	KY310774	KY310883	KY310935
<i>glandulatus</i>	YJ20					OM505466	OM506149	OM505263
<i>gongshanensis</i>	KIZ020492					–	MW021395	MW133458
<i>jiulongensis</i>	KIZ045055	China, Sichuan, Ganzi	30°4'	101°57'		–	KU243066	MW133417
<i>jiulongensis</i>	KIZYXP32464					–	MW021354	MW133416
<i>kanjiroba</i>	A2014/13	Nepal, Jumla district	29°21'	82°09'	3285	KY310776	KY310885	KY310936
<i>kanjiroba</i>	A8_12	Nepal, Rukum district	28°42'	82°55'	3340	KY310778	KY310887	KY310938
<i>kanjiroba</i>	A9_12	Nepal, Baglung district	28°36'	83°01'	3250	KY310779	KY310888	KY310939
<i>kanjiroba</i>	A10_12	Nepal, Baglung district	28°36'	83°01'	3250	KY310780	KY310889	KY310940
<i>kanjiroba</i>	A11_12	Nepal, Baglung district	28°36'	83°01'	3250	KY310781	KY310890	KY310941
<i>kanjiroba</i>	A12_12	Nepal, Baglung district	28°36'	83°01'	3250	KY310782	KY310891	KY310942
<i>kanjiroba</i>	A13_12	Nepal, Baglung district	28°36'	83°01'	3250	KY310783	KY310892	KY310943
<i>kanjiroba</i>	A14_12	Nepal, Baglung district	28°30'	83°02'	3073	KY310784	KY310893	KY310944
<i>kanjiroba</i>	A15_12	Nepal, Myagdi district	28°30'	83°07'	2993	KY310785	KY310894	KY310945
<i>kanjiroba</i>	A16_12	Nepal, Myagdi district	28°30'	83°07'	2993	KY310786	KY310895	KY310946
<i>kanjiroba</i>	A0574/99	Nepal, Jumla district	29°06'	82°35'	3600	PP344607	PP359509	PP349711
<i>kanjiroba</i>	A0576/99	Nepal, Dolpa district	29°01'	82°47'	4450	KY310787	KY310896	KY310947
<i>kanjiroba</i>	A1248/05	Nepal, Jumla district	29°21'	82°23'	4450	PP344608	–	PP349712
<i>kanjiroba</i>	A1249/05	Nepal, Jumla district	29°21'	82°23'	4450	KY310788	KY310897	KY310948
<i>kanjiroba</i>	A1250/05	Nepal, Jumla district	29°21'	82°23'	4450	KY310789	–	KY310949
<i>kanjiroba</i>	A1251/05	Nepal, Jumla district	29°21'	82°23'	4450	KY310790	–	KY310950
<i>kanjiroba</i>	A1252/05	Nepal, Jumla district	29°21'	82°23'	4450	KY310791	KY310898	KY310951
<i>kanjiroba</i>	A1253/05	Nepal, Jumla district	29°23'	82°08'	2700	KY310792	–	KY310952
<i>khumbu sp. nov.</i> , nom. subsp.	ZFMK 104174§	Nepal, Dolakha district	27°41'	86°16'	3396	PP344614	PP359522	PP349717
<i>khumbu sp. nov.</i> , nom. subsp.	MNHN 2003.3039#	Nepal, Paiya [=Puiyan]	27°38'	86°43'	2800	PQ576545	–	–
<i>khumbu sp. nov.</i> , nom. subsp.	MNHN 2003.3040*	Nepal, Paiya [=Puiyan]	27°38'	86°43'	2800	PQ576546	–	PQ572205
<i>khumbu sp. nov.</i> , nom. subsp.	Ne5_2013	Nepal, Solu Khumbu, Surkie La	27°34'	86°48'	2900	KY310802	KY310905	KY310965
<i>khumbu sp. nov.</i> , nom. subsp.	Ne6_2013	Nepal, Solu Khumbu, Surkie La	27°34'	86°48'	3000	KY310803	KY310906	KY310966
<i>khumbu sp. nov.</i> , nom. subsp.	Ne7_2013	Nepal, Solu Khumbu, Surkie La	27°34'	86°48'	3000	KY310804	KY310907	KY310967
<i>khumbu sp. nov.</i> , nom. subsp.	Ne8_2013	Nepal, Solu Khumbu, Surkie La	27°35'	86°50'	3550	KY310805	KY310908	KY310968
<i>khumbu sp. nov.</i> , nom. subsp.	Ne11_2013	Nepal, Solu Khumbu, Taksindo	27°39'	86°36'	3900	KY310806	KY310909	KY310969
<i>khumbu sp. nov.</i> , nom. subsp.	Ne14_2013	Nepal, Solu Khumbu, Lamajura La	27°34'	86°30'	3100	KY310807	KY310910	KY310970
<i>khumbu sp. nov.</i> , nom. subsp.	Ne15_2013	Nepal, Solu Khumbu, Lamajura La	27°34'	86°30'	3400	KY310808	KY310911	KY310971
<i>khumbu sp. nov.</i> , nom. subsp.	ZFMK 104175*	Nepal, Ramechhap district	27°35'	86°20'	3084	PP344610	PP359511	PP349713
<i>khumbu sp. nov.</i> , nom. subsp.	NHME 9705.21	Nepal, Ramechhap district	27°35'	86°20'	3084	PP344611	PP359513	PP349714
<i>khumbu sp. nov.</i> , nom. subsp.	NHME 9705.22	Nepal, Ramechhap district	27°35'	86°20'	3084	PP344612	PP359514	PP349715
<i>khumbu sp. nov.</i> , nom. subsp.	NHME 9705.74	Nepal, Dolakha district, Jiri	27°42'	86°16'	3396	PP344613	PP359517	PP349716
<i>khumbu sp. nov.</i> , nom. subsp.	NHME 9705.83	Nepal, Dolakha district, Jiri	27°42'	86°17'	3396	PP344615	PP359523	PP349718
<i>khumbu sp. nov.</i> , nom. subsp.	NHME 9705.85	Nepal, Dolakha district, Jiri	27°41'	86°15'	3655	PP344616	PP359524	PP349719
<i>khumbu sp. nov.</i> , nom. subsp.	NHME 9705.88	Nepal, Dolakha district, Jiri	27°41'	86°15'	3655	PP344617	PP359525	PP349720
<i>khumbu sp. nov.</i> , nom. subsp.	NHME 9705.89	Nepal, Dolakha district, Jiri	27°41'	86°15'	3655	PP344618	PP359526	PP349721
<i>khumbu sp. nov.</i> , nom. subsp.	NHME 9705.90	Nepal, Dolakha district, Jiri	27°41'	86°15'	3655	PP344619	PP359527	PP349722
<i>khumbu sp. nov.</i> , nom. subsp.	NHME 9705.99	Nepal, Dolakha district	27°40'	86°14'	2790	PP344620	PP359528	PP349723
<i>khumbu sp. nov.</i> , nom. subsp.	NHME 9705.100	Nepal, Dolakha district	27°40'	86°14'	2790	PP344621	PP359529	PP349724
<i>k. makalu subsp. nov.</i>	MNHN 2003.3041§	Nepal, Bhojpur district, Salpa Pokhari	27°27'	87°56'		PQ576547	–	PQ572206
<i>k. makalu subsp. nov.</i>	MNHN 2003.3042*#	Nepal, Bhojpur district, Salpa Pokhari	27°27'	87°56'		PQ576548	–	–
<i>k. makalu subsp. nov.</i>	NHME JS1405.14	Nepal, Sankhuwasabha district	27°39'	87°12'		KY310797	PQ559260	PQ572207
<i>k. makalu subsp. nov.</i>	NHME JS1405.23	Nepal, Sankhuwasabha district	27°38'	87°13'		KY310797	–	KY310958
<i>k. makalu subsp. nov.</i>	NHME JS1405.24	Nepal, Sankhuwasabha district	27°38'	87°13'		KY310798	KY310902	KY310959
<i>k. makalu subsp. nov.</i>	NHME JS1405.25	Nepal, Sankhuwasabha district	27°38'	87°13'		KY310799	KY310903	KY310960
<i>k. makalu subsp. nov.</i>	NHME JS1405.26	Nepal, Sankhuwasabha district	27°38'	87°13'	3600	KY310800	PQ559261	KY310961
<i>k. makalu subsp. nov.</i>	NHME JS1405.27	Nepal, Sankhuwasabha district	27°38'	87°13'	3600	KY310801	PQ559262	KY310962

<i>k. makalu subsp. nov.</i>	NHME JS1405.28	Nepal, Sankhuwasabha district	27°38'	87°13'	3600	KY310801	KY310904	KY310963
<i>liupanensis</i>	FWR11	China, Liupan Mountains	35°36'	106°7'		–	KC140483	JX533792
<i>liupanensis</i>	CPG8					–	KC140479	JX533802
<i>luozhaensis</i>	CIB_119122	China, Tibet, Luozha	28°23'	90°51'		OR469860	OR141848	–
<i>luozhaensis</i>	CJA20220121	China, Tibet, Luozha	28°23'	90°51'		OR469873	OR141849	–
<i>luozhaensis</i>	CIB_119115	China, Tibet, Luozha	28°23'	90°51'		OR469854	OR141832	–
<i>mammatus</i>	LC045	China, Sichuan, Baiyu	31°01'	99°15'	3494	KY310775	KY310884	KY310964
<i>mammatus</i>	XM949	China, Sichuan, Kangding, Jia Gen Ba	29°54'	101°35'	3350	–	MW021360	FJ463152
<i>muliensis</i>	KIZYPX36717					–	MW167046	MW133420
<i>muliensis</i>	KIZYPX36718					–	MW167047	MW133421
<i>nepalensis</i>	A2018/13	Nepal, Chainpur, Khaptad, Tribeni	29°22'	81°08'	3000	KY310777	KY310886	KY310937
<i>ningshanensis</i>	HBV2	China, Shaanxi, Taibai, Huangbaiyuan	33°52'	107°31'	1652	–	KC140559	KC140561
<i>ningshanensis</i>	HBV3	China, Shaanxi, Taibai, Huangbaiyuan	33°52'	107°31'	1652	–	KC140560	KC140562
<i>nyingchiensis</i>	JS171001	Bhutan, Black Moutains	27°21'	90°20'	3940	PP344622	–	PP349725
<i>nyingchiensis</i>	JS171002	Bhutan, Black Moutains	27°21'	90°20'	3940	PP344623	–	PP349726
<i>nyingchiensis</i>	Iz10	China, Tibet, Nyingchi, Bayi, Lulang	29°46'	94°44'		OM505486	OM506169	OM505283
<i>nyingchiensis</i>	BQ16	China, Tibet, Nyingchi, Bayi, Lulang	29°46'	94°44'		OM505493	OM506176	OM505290
<i>nyingchiensis</i>	BQ26	China, Tibet, Nyingchi, Bayi, Lulang	29°46'	94°44'		OM505496	OM506179	OM505293
<i>occidentalis</i>	Pk1	Pakistan, Deosai Plains	34°59'	75°15'	4100	PP344624	–	PP349727
<i>occidentalis</i>	Pk2	Pakistan, Deosai Plains	34°59'	75°15'	4100	KY310794	KY310899	KY310954
<i>occidentalis</i>	Pk5	Pakistan, Deosai Plains	34°59'	75°15'	4100	KY310795	KY310900	KY310956
<i>occidentalis</i>	Pk6	Pakistan, Deosai Plains	34°59'	75°15'	4100	KY310796	KY310901	KY310957
<i>occidentalis</i>	2009138	Pakistan, Lulusar	35°5'	73°55'		–	MZ073379	MZ126691
<i>sikimmensis</i>	KIZ011127	China, Tibet, Yadong	27°49'	89°4'		–	KU243058	MW133429
<i>sikimmensis</i>	KIZ07371	China, Tibet, Yadong	27°49'	89°4'		–	KU243059	MW133430
<i>sikimmensis</i>	KIZ013982	China, Tibet, Yadong	27°49'	89°4'		–	MW021367	MW133431
<i>sikimmensis</i>	KIZ013983	China, Tibet, Yadong	27°49'	89°4'		–	MW021368	MW133432
<i>spinosus</i>	KIZ011092					–	MW021362	MW133426
<i>spinosus</i>	KIZ011114	China, Tibet, Medog	29°42'	95°35'	2705	–	KU243053	MW133428
<i>spinosus</i>	KIZ011100	China, Tibet, Medog	29°42'	95°35'	2705	–	KU243054	MW133424
<i>tengchongensis</i>	SYSa005799	China, Yunnan, Tengchong	25°1'	98°29'		MK121789	MK121783	–
<i>tengchongensis</i>	SYSa005800	China, Yunnan, Tengchong	25°1'	98°29'		MK121790	MK121784	–
<i>tengchongensis</i>	SYSa005801	China, Yunnan, Tengchong	25°1'	98°29'		MK121791	MK121785	–
<i>tuberculatus</i>	CIBXM988	China, Sichuan, Yuexi, Puxiong	28°31'	102°45'	2900	EF397278	–	FJ945493
<i>tuberculatus</i>	XM995	China, Sichuan, Yuexi, LaJi	28°5'	102°49'	2520	–	MW021351	FJ945492
<i>tuberculatus</i>	KIZYPX11046					–	MW021397	MW133413
<i>wuguanfui</i>	KIZ011101	China, Tibet, Medog	29°42'	95°35'	2705	–	KU243060	MW133433
<i>wuguanfui</i>	KIZ011102	China, Tibet, Medog	29°42'	95°35'		–	KU243061	MW133434
<i>wuguanfui</i>	KIZ011110	China				–	MW021370	MW133435
<i>Oreolalax chuanbeiensis</i>	DQR-Pingwu-001J					EU180887	–	EU180929
<i>O. omeimontis</i>	KIZ-O.096002					EU180886	–	EU180928
Additional species DNC detection								
<i>pingwuensis</i>	ZYC3017						PP538452	
<i>pingwuensis</i>	ZYC3018						PP538453	
<i>wanglangensis</i>	21514N1						OQ361635	
<i>wanglangensis</i>	21514N2						OQ361636	
<i>wanglangensis</i>	21505N4						OQ361637	

Supplementary file 1C. List of samples used in this study for phylogenetic network analysis. Accession numbers of sequences generated in this study are indicated by grey cells. [§]Holotype; *paratype; nominotypical subspecies = nom. subsp.

<i>species</i>	<i>ID</i>	<i>Locality</i>	<i>Lat</i>	<i>Long</i>	<i>Alt m</i>	<i>bfbf7</i>	<i>ccnb2</i>	<i>rag1</i>
<i>boulengeri</i>	A1_AL	China, Tibet	29°36'	85°44'	5067	KY310818	KY352195	KY311036
<i>boulengeri</i>	A2_AL	China, Tibet	29°36'	85°44'	5067	KY310819	KY352196	KY311037
<i>boulengeri</i>	A3_AL	China, Tibet	30°09'	90°38'	4887	KY310820	–	KY311038
<i>boulengeri</i>	A5_AL	China, Tibet	30°09'	90°38'	4887	KY310821	–	KY311039
<i>chintingensis</i>	LC141 01_6/01_9	China, Sichuan, Tianquan	30°14'	102°30'	2500	KY310824-25	KY352197-98	KY311042-43
<i>chintingensis</i>	JF174	China, Sichuan	29°39'	102°57'		FJ945585	FJ945677	–
<i>chintingensis</i>	ROM40460	China, Sichuan	29°39'	102°57'		–	–	EF397301
<i>chintingensis</i>	ROM39065	China, Sichuan, Hongya	29° 54'	103° 22'		–	–	EF397303
<i>glandulatus</i>	2014_Sc1	China, Sichuan, Garzê	31°40'	99°43'	3457	KY310826	KY352199	KY311044
<i>glandulatus</i>	2014_Sc2	China, Sichuan, Garzê	29°47'	100°25'	3713	KY310827	KY352200	KY311045
<i>glandulatus</i>	SH150557	China, Sichuan, Garzê	29°47'	100°25'	3713	KY310831	–	KY311049
<i>glandulatus</i>	CIB_ZYCB736	China, Sichuan, Yajiangeng	29° 54'	102°0'		MW194104	–	–
<i>glandulatus</i>	2014_KQ61	China, Sichuan, Garzê	29°47'	100°25'	3713	KY310828	KY352201	KY311046
<i>glandulatus</i>	XM1188	China, Sichuan, Shagong	29°09'	99°56'	4000	–	FJ945646	EF397298
<i>glandulatus</i>	IOZ4198	China, Sichuan, Sangzui	29°11'	100°06'	4000	FJ945554	FJ945645	–
<i>glandulatus</i>	XM1190					–	FJ945644	–
<i>glandulatus</i>	XM1191					–	FJ945643	–
<i>glandulatus</i>	IOZ4240	China, Sichuan, Changhaizi	29°54'	101°60'	3815	FJ945558	FJ945642	–
<i>glandulatus</i>	SH150516	China, Sichuan, Tagong	30°14'	101°30'	3526	KY310829	–	KY311047
<i>glandulatus</i>	SH150531	China, Sichuan, Xinduqiao	30°02'	101°32'	3474	KY310830	–	KY311048
<i>gongshanensis</i>	CAS234295					–	–	KX208788
<i>kanjiroba</i>	A2014/13*	Nepal, Jumla district	29°21'	82°09'	3285	KY310833	–	KY311051
<i>kanjiroba</i>	A8_12	Nepal, Rukum district	28°42'	82°55'	3340	KY310835	KY352204	KY311053
<i>kanjiroba</i>	A9_12	Nepal, Baglung district	28°36'	83°01'	3250	KY310836	KY352205	KY311054
<i>kanjiroba</i>	A10_12	Nepal, Baglung district	28°36'	83°01'	3250	KY310837	–	KY311055
<i>kanjiroba</i>	A11_12	Nepal, Baglung district	28°36'	83°01'	3250	–	KY352206	KY311053
<i>kanjiroba</i>	A12_12	Nepal, Baglung district	28°36'	83°01'	3250	KY310838	KY352207	KY311056
<i>kanjiroba</i>	A13_12	Nepal, Baglung district	28°36'	83°01'	3250	KY310839	KY352208	KY311057
<i>kanjiroba</i>	A14_12	Nepal, Baglung district	28°30'	83°02'	3073	KY310840	KY352209	KY311058
<i>kanjiroba</i>	A15_12	Nepal, Myagdi district	28°30'	83°07'	2993	KY310841	KY352210	KY311059
<i>kanjiroba</i>	A0574/99* Scut1	Nepal, Jumla district	29°06'	82°35'	3600	PP349666	–	–
<i>kanjiroba</i>	A0576/99 Scut2	Nepal, Dolpa district	29°01'	82°47'	4450	–	–	KY311051
<i>kanjiroba</i>	A1248/05 Scut5	Nepal, Jumla district	29°21'	82°23'	4449	KY310842	KY352211	KY311060
<i>kanjiroba</i>	A1249/05 Scut6	Nepal, Jumla district	29°21'	82°23'	4450	KY310843	–	KY311061
<i>kanjiroba</i>	A1250/05 Scut7	Nepal, Jumla district	29°21'	82°23'	4450	KY310844	–	KY311062
<i>kanjiroba</i>	A1251/05 Scut8	Nepal, Jumla district	29°21'	82°23'	4450	KY310845	KY352212	KY311063
<i>kanjiroba</i>	A1252/05 Scut9	Nepal, Jumla district	29°21'	82°23'	4450	–	KY352213	KY311064
<i>kanjiroba</i>	A1253/05 Scut10	Nepal, Jumla district	29°23'	82°08'	2700	PP349667	–	PP349689
<i>kanjiroba</i>	A1254/05 Scut11	Nepal, Jumla district	29°23'	82°08'	2700	PP349668	–	–
<i>khumbu sp. nov.</i> , nom. subsp.	ZFMK 104174 [§]	Nepal, Dolakha district, Jiri	27°42'	86°17'	3396	PP349673	PP349683	PP349699
<i>khumbu sp. nov.</i> , nom. subsp.	MNHN 2003.3039*	Nepal, Solukhumbū district, Paiya	27°38'	86°43'	2800	–	–	PQ589237
<i>khumbu sp. nov.</i> , nom. subsp.	MNHN 2003.3040*	Nepal, Solukhumbū district, Paiya	27°38'	86°43'	2800	–	–	PQ589238
<i>khumbu sp. nov.</i> , nom. subsp.	Ne5_2013	Nepal, Solokhumbū, Surkie La	27°34'	86°48'	2900	KY310854	KY352223	KY311073
<i>khumbu sp. nov.</i> , nom. subsp.	Ne6_2013	Nepal, Solokhumbū, Surkie La	27°34'	86°48'	3000	KY310855	KY352224	KY311074
<i>khumbu sp. nov.</i> , nom. subsp.	Ne7_2013	Nepal, Solokhumbū, Surkie La	27°34'	86°48'	3000	KY310856	KY352224	KY311075
<i>khumbu sp. nov.</i> , nom. subsp.	Ne8_2013	Nepal, Solokhumbū, Surkie La	27°35'	86°50'	3550	KY310857	KY352225	KY311076
<i>khumbu sp. nov.</i> , nom. subsp.	Ne11_2013	Nepal, Solokhumbū, Taksindu	27°39'	86°36'	3900	KY310858	KY352226	KY311077
<i>khumbu sp. nov.</i> , nom. subsp.	Ne14_2013	Nepal, Solokhumbū, Lamajura La	27°34'	86°30'	3100	KY310859	–	KY311078
<i>khumbu sp. nov.</i> , nom. subsp.	Ne15_2013	Nepal, Solokhumbū, Lamajura La	27°34'	86°30'	3400	–	–	PP349707
<i>khumbu sp. nov.</i> , nom. subsp.	NHME 9705.10	Nepal, Ramechhap district	27°35'	86°20'	3084	–	–	PP349690
<i>khumbu sp. nov.</i> , nom. subsp.	ZFMK 104175*	Nepal, Ramechhap district	27°35'	86°20'	3084	–	PP349679	–
<i>khumbu sp. nov.</i> , nom. subsp.	NHME 9705.15	Nepal, Ramechhap district	27°35'	86°20'	3084	–	–	PP349691
<i>khumbu sp. nov.</i> , nom. subsp.	NHME 9705.21	Nepal, Ramechhap district	27°35'	86°20'	3084	–	–	PP349692
<i>khumbu sp. nov.</i> , nom. subsp.	NHME 9705.22	Nepal, Ramechhap district	27°35'	86°20'	3084	–	–	PP349693
<i>khumbu sp. nov.</i> , nom. subsp.	NHME 9705.68	Nepal, Dolakha district, Jiri	27°42'	86°17'	3582	PP349669	PP349680	–
<i>khumbu sp. nov.</i> , nom. subsp.	NHME 9705.69	Nepal, Dolakha district, Jiri	27°42'	86°17'	3396	PP349670	PP349681	PP349694
<i>khumbu sp. nov.</i> , nom. subsp.	NHME 9705.73	Nepal, Dolakha district, Jiri	27°42'	86°16'	3396	–	–	PP349695
<i>khumbu sp. nov.</i> , nom. subsp.	NHME 9705.74	Nepal, Dolakha district, Jiri	27°42'	86°16'	3396	–	–	PP349696
<i>khumbu sp. nov.</i> , nom. subsp.	NHME 9705.75	Nepal, Dolakha district, Jiri	27°42'	86°16'	3396	–	–	PP349697
<i>khumbu sp. nov.</i> , nom. subsp.	NHME 9705.76	Nepal, Dolakha district, Jiri	27°42'	86°16'	3396	–	–	PP349698
<i>khumbu sp. nov.</i> , nom. subsp.	NHME 9705.79	Nepal, Dolakha district, Jiri	27°42'	86°17'	3396	PP349671	–	–
<i>khumbu sp. nov.</i> , nom. subsp.	NHME 9705.80	Nepal, Dolakha district, Jiri	27°42'	86°17'	3396	PP349672	PP349682	–
<i>khumbu sp. nov.</i> , nom. subsp.	NHME 9705.83	Nepal, Dolakha district, Jiri	27°42'	86°17'	3396	PP349674	PP349684	PP349700
<i>khumbu sp. nov.</i> , nom. subsp.	NHME 9705.85	Nepal, Dolakha district, Jiri	27°41'	86°15'	3655	PP349675	PP349685	PP349701
<i>khumbu sp. nov.</i> , nom. subsp.	NHME 9705.88	Nepal, Dolakha district, Jiri	27°41'	86°15'	3655	PP349676	PP349686	PP349702
<i>khumbu sp. nov.</i> , nom. subsp.	NHME 9705.89	Nepal, Dolakha district, Jiri	27°41'	86°15'	3655	PP349677	PP349687	PP349703

<i>khumbu sp. nov.</i> , nom. subsp.	NHME 9705.90	Nepal, Dolakha district, Jiri	27°41'	86°15'	3655	PP349678	PP349688	-
<i>khumbu sp. nov.</i> , nom. subsp.	NHME 9705.99	Nepal, Dolakha district	27°40'	86°14'	2790	-	-	PP349704
<i>khumbu sp. nov.</i> , nom. subsp.	NHNE 9705.100	Nepal, Dolakha district	27°40'	86°14'	2790	-	-	PP349705
<i>khumbu sp. nov.</i> , nom. subsp.	NHNE 9705.102	Nepal, Dolakha district	27°40'	86°14'	2790	-	-	PP349706
<i>k. makalu subsp. nov.</i>	MNHN 2003.3041 ^s	Nepal, Bhojpur district, Salpa Pokhari	27°27'	87°56'	-3400	-	-	-
<i>k. makalu subsp. nov.</i>	NHME JS1405.14	Nepal, Sankhuwasabha district	27°39'	87°12'	3600	-	-	KY311058
<i>k. makalu subsp. nov.</i>	NHME JS1405.23	Nepal, Sankhuwasabha district	27°38'	87°13'	3000	KY310848	-	KY311067
<i>k. makalu subsp. nov.</i>	NHME JS1405.24	Nepal, Sankhuwasabha district	27°38'	87°13'	3600	KY310849	-	KY311068
<i>k. makalu subsp. nov.</i>	NHME JS1405.25	Nepal, Sankhuwasabha district	27°38'	87°13'	3600	KY310850	KY352219	KY311069
<i>k. makalu subsp. nov.</i>	NHME JS1405.26	Nepal, Sankhuwasabha district	27°38'	87°13'	3600	KY310851	KY352220	KY311070
<i>k. makalu subsp. nov.</i>	NHME JS1405.27	Nepal, Sankhuwasabha district	27°38'	87°13'	3600	KY310852	-	KY311071
<i>k. makalu subsp. nov.</i>	NHME JS1405.28	Nepal, Sankhuwasabha district	27°38'	87°13'	3600	KY310853	KY352221	KY311072
<i>liupanensis</i>	KIZNX080519					-	-	MW111376
<i>luozhaensis</i>	CIB_119115	China, Tibet, Luozha	28°14'	90°47'	4150	-	-	OR546320
<i>luozhaensis</i>	CIB_119116	China, Tibet, Luozha	28°14'	90°47'	4150	-	-	OR546321
<i>luozhaensis</i>	CIB_119117	China, Tibet, Gari, Se Town	28°13'	90°49'	3970	-	-	OR546322
<i>mammatus</i>	LC045	China, Sichuan, Baiyu	31°01'	99°15'	3494	KY310832	KY352202	KY311050
<i>mammatus</i>	LC066	China, Sichuan, Bai Yu	31°01'	99°15'	3494	FJ945583	FJ945674	-
<i>mammatus</i>	XM949	China, Sichuan, Jia Gen Ba	29°54'	101°35'	3350	FJ945582	FJ945676	-
<i>mammatus</i>	XM972	China, Sichuan, Xinduqiao	30°01'	101°28'	3350	FJ945581	FJ945675	EF397300
<i>muliensis</i>	IOZCAS3638	China, Sichuan, Bailingshan	27°20'	101°32'	3866	-	-	EF397302
<i>nepalensis</i>	A2018/13	Nepal, Chainpur, Khaptad	29°22'	81°08'	3000	KY310834	KY352203	KY311052
<i>nepalensis</i>	A1724/09	Nepal, Chainpur, Khaptad	29°22'	81°08'	3000	PP755129	PP755130	PP755131
<i>nyingchiensis</i>	KIZ017459	China, Tibet, Nyingchi	29° 39'	94° 21'		-	-	MW111377
<i>occidentalis</i>	Pk1	Pakistan, Deosai Plains	34°59'	75°15'	4100	KY310846	KY352214	KY311065
<i>occidentalis</i>	Pk2	Pakistan, Deosai Plains	34°59'	75°15'	4100	KY310846	KY352215	PP349708
<i>occidentalis</i>	Pk4	Pakistan, Deosai Plains	34°59'	75°15'	4100	KY310847	KY352216	KY311066
<i>occidentalis</i>	Pk5	Pakistan, Deosai Plains	34°59'	75°15'	4100	KY310846	KY352217	PP349709
<i>occidentalis</i>	Pk6	Pakistan, Deosai Plains	34°59'	75°15'	4100	KY310847	KY352218	KY311066
<i>occidentalis</i>	ZFMK103262	Pakistan, Astore	35°14'	74°43'	2941	-	-	MZ126688
<i>occidentalis</i>	SH2009138	Pakistan, Lulusar	35°04'	73°55'	3399	-	-	MZ126689
<i>tuberculatus</i>	KIZYPX11046					-	-	MW111379
<i>tuberculatus</i>	IOZ4187	China, Sichuan, Yading	28°26'	100°21'	3997	-	FJ945652	-
<i>tuberculatus</i>	XM988	China, Sichuan, Puxiong	28°31'	102°45'	2900	FJ945565	FJ945651	-
<i>tuberculatus</i>	XM989	China, Sichuan, Puxiong	28°31'	102°45'	2900	FJ945564	FJ945650	-
<i>tuberculatus</i>	XM995	China, Sichuan, LaJi	28°5'	102°49'	2520	FJ945563	FJ945649	-
<i>tuberculatus</i>	IOZ3554	China, Sichuan, Yele	28°55'	102°11'	2691	-	FJ945648	-
<i>tuberculatus</i>	IOZ3555	China, Sichuan, Yele	28°55'	102°11'	2691	FJ945566	FJ945647	-
<i>wuguanfui</i>	KIZ011102	China, Tibet, Medog	29°42'	95°35'	2705	-	-	MW111378

Supplementary file 1D. Uncorrected p-distance (lower diagonal) and standard deviation (upper diagonal) for COI sequences from phylogenetic analysis of species of the genus *Scutigera* (Anura: Megophryidae). Distances $\leq 5.5\%$ are indicated by grey-shaded cells. Distances to the newly described species are bold. Nominotypical subspecies = nom. subsp.

<i>Scutigera</i> species	1	2	3	4	5	6	7	8	9	10	11	12	13	14	15	16	17	18	19	20	21	22	23	24
1 <i>bhutanensis</i>		123	133	133	130	115	132	129	120	123	140	125	134	110	120	130	132	120	148	153	119	132	155	134
2 <i>boulengeri</i>	1148		112	129	089	120	085	095	128	061	105	117	133	118	116	132	128	119	105	146	119	130	144	135
3 <i>chintingensis</i>	1320	1259		122	124	125	124	118	130	114	127	121	131	122	120	129	129	131	129	142	121	128	148	138
4 <i>ghunsa</i>	1248	1224	1153		138	127	135	141	134	122	144	118	147	124	118	137	124	139	140	149	114	126	161	143
5 <i>glandulatus</i>	1188	719	1253	1182		131	105	097	140	094	115	122	146	124	124	143	137	124	111	156	120	132	160	138
6 <i>gongshanensis</i>	992	1156	1170	998	1215		141	131	109	121	148	119	134	087	119	134	109	109	142	148	116	120	144	136
7 <i>jiulongensis</i>	1130	618	1197	1185	675	1185		075	141	083	104	131	144	133	119	142	132	126	108	156	130	133	158	137
8 <i>liupanensis</i>	1133	709	1097	1114	651	1094	398		136	088	108	123	136	123	127	146	135	126	105	155	124	126	161	132
9 <i>luozhaensis</i>	1118	1336	1280	1147	1288	806	1269	1255		130	146	132	132	062	127	137	125	127	143	153	123	129	146	153
10 <i>mammatus</i>	1195	489	1294	1239	803	1187	683	738	1386		097	115	129	119	110	129	123	118	094	137	115	126	144	133
11 <i>muliensis</i>	1230	829	1212	1319	790	1355	696	722	1307	829		134	143	139	135	145	135	141	089	159	130	144	158	143
12 <i>nepalensis</i>	1189	1129	1247	945	1211	991	1130	1069	1268	1187	1212		143	122	112	144	126	126	136	149	087	126	145	126
13 <i>ningshanensis</i>	1498	1445	1379	1444	1524	1349	1374	1336	1263	1409	1435	1594		125	130	137	142	133	150	142	129	139	087	140
14 <i>nyingchiensis</i>	1054	1247	1273	1135	1286	730	1272	1214	485	1307	1361	1180	1333		115	124	109	112	136	139	112	119	135	134
15 <i>occidentalis</i>	1111	1081	1160	1065	1123	1145	992	1129	1276	1070	1083	1079	1371	1250		129	127	116	128	149	110	122	146	127
16 <i>sikimmensis</i>	1145	1422	1297	1279	1365	1275	1431	1355	1227	1393	1462	1475	1352	1205	1260		138	141	138	137	137	135	152	130
17 <i>spinosus</i>	1123	1242	1165	1016	1147	766	1230	1150	992	1230	1194	1052	1364	951	1119	1203		116	130	146	116	134	152	146
18 <i>tengchongensis</i>	1067	1219	1305	1307	1248	860	1230	1186	1032	1259	1426	1278	1414	1033	1236	1338	915		135	149	122	129	143	130
19 <i>tuberculatus</i>	1339	810	1220	1304	810	1232	769	688	1274	804	536	1196	1411	1310	1031	1379	1161	1304		159	135	133	160	141
20 <i>wuguangui</i>	1497	1477	1491	1480	1604	1444	1591	1578	1557	1453	1586	1462	1444	1474	1560	1395	1462	1581	1482		144	144	155	149
21 <i>kanjiroba</i>	1122	1226	1255	950	1158	1065	1221	1142	1149	1212	1183	707	1492	1135	1169	1326	978	1206	1276	1547		125	140	126
22 <i>khumbu</i> sp. nov., nom. subsp.	11.58	13.78	11.88	11.99	12.46	11.14	13.35	11.80	11.81	14.04	14.41	13.03	15.24	11.74	12.67	12.48	11.79	12.86	12.33	15.15	11.36		158	112
23 <i>feiliangi</i>	1377	1316	1345	1379	1370	1291	1289	1326	1267	1325	1230	1377	526	1276	1275	1270	1172	1329	1221	1333	13.04	14.15		165
24 <i>k. makalu</i> subsp. nov.	13.48	13.55	13.64	13.38	12.66	13.73	13.39	12.47	14.95	14.22	14.04	12.98	15.10	14.01	12.81	12.60	14.12	13.53	13.22	15.38	13.19	8.84	14.96	

Supplementary file 1E. Uncorrected p-distance (lower diagonal) and standard deviation (upper diagonal) for cyt b sequences from phylogenetic analysis of species of the genus *Scutigera* (Anura: Megophryidae). Distances $\leq 5.5\%$ are indicated by grey-shaded cells. Distances to the newly described species are bold. Nominotypical subspecies = nom. subsp.

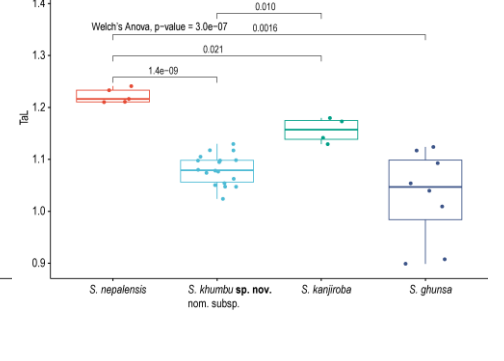
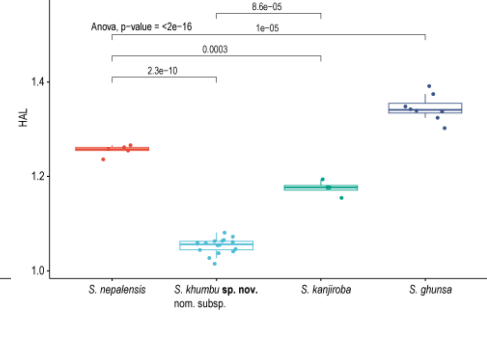
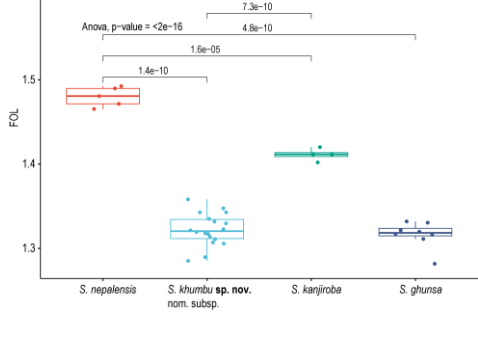
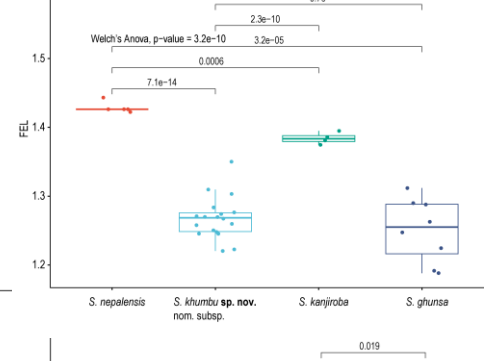
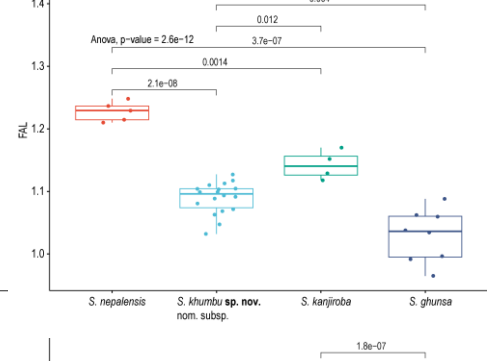
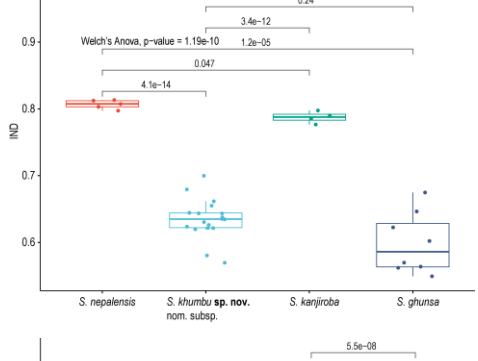
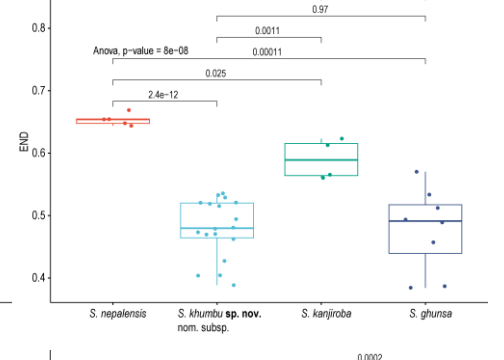
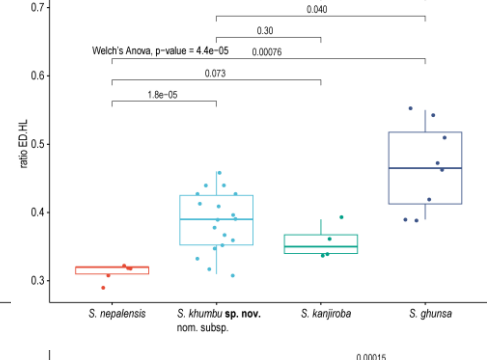
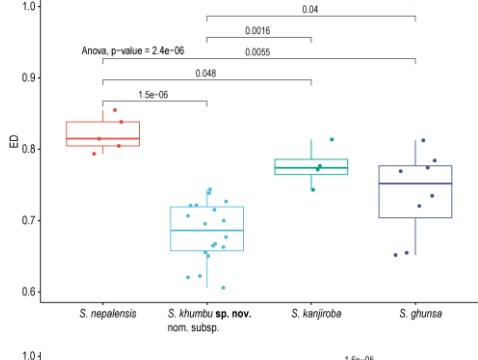
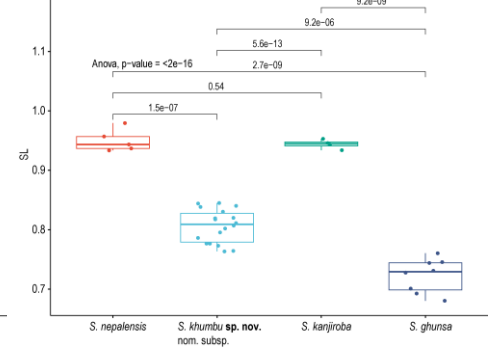
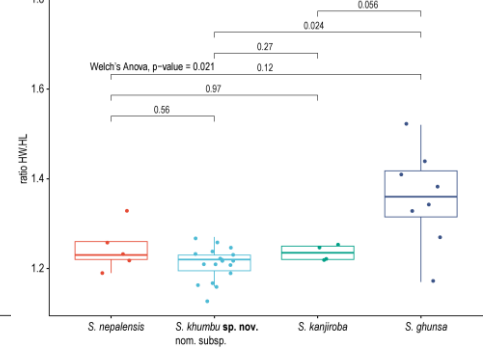
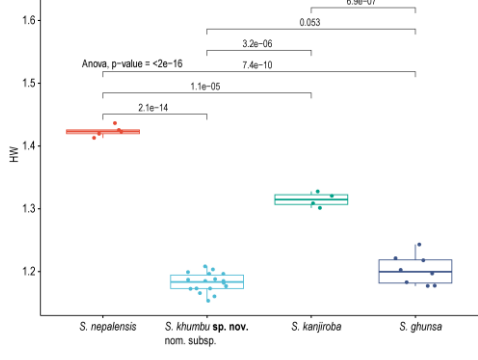
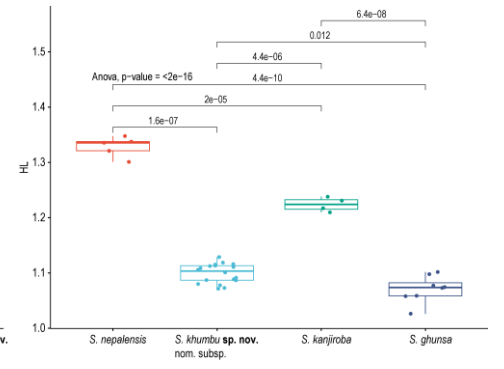
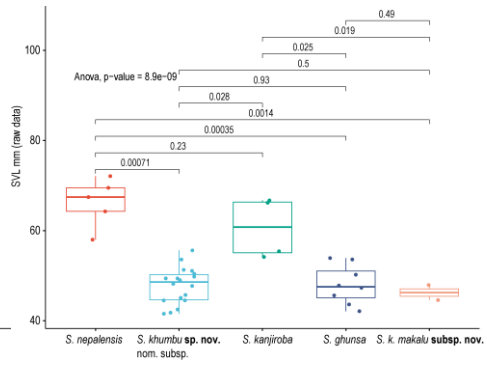
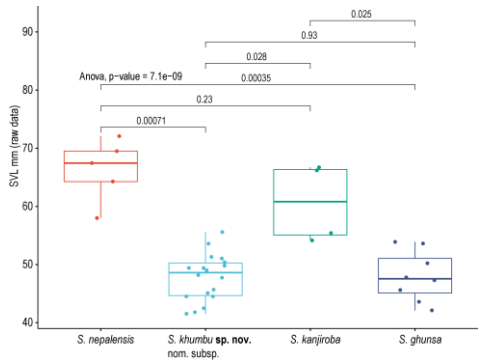
	1	2	3	4	5	6	7	8	9	10	11	12	13	14	15	16	17	18	19	20	21
1 <i>boulengeri</i>		0.90	0.97	0.62	1.28	0.71	0.68	0.45	0.69	0.94	0.97	0.89	0.88	0.92	0.92	0.70	1.08	0.91	0.96	0.95	0.92
2 <i>chintingensis</i>	11.59		0.99	1.02	1.34	1.08	1.00	0.87	0.96	0.99	0.93	0.94	0.96	0.94	0.90	0.98	1.15	0.96	1.01	0.90	1.00
3 <i>ghunsa</i>	11.76	10.24		1.06	1.36	1.10	0.99	0.96	1.01	1.02	1.01	0.98	0.99	0.94	0.97	1.04	1.19	0.97	0.99	1.04	0.89
4 <i>glandulatus</i>	6.13	11.90	11.47		1.36	0.89	0.78	0.68	0.75	1.05	1.09	0.93	0.96	1.05	1.01	0.80	1.13	0.98	1.05	1.08	1.02
5 <i>gongshanensis</i>	13.49	13.84	14.01	12.98		1.40	1.35	1.26	1.27	1.39	1.40	1.10	1.29	1.24	1.23	1.25	1.40	1.30	1.30	1.44	1.32
6 <i>jiulongensis</i>	7.29	12.66	11.87	8.40	13.76		0.69	0.74	0.84	1.02	1.11	0.99	1.05	1.02	1.08	0.87	1.13	0.99	1.08	1.12	1.03
7 <i>liupanensis</i>	6.89	11.38	10.63	6.53	12.46	5.22		0.72	0.83	1.00	1.13	0.99	0.96	0.99	1.01	0.84	1.13	0.94	1.05	1.11	1.02
8 <i>mammatus</i>	5.28	11.65	11.47	7.05	13.19	8.31	7.24		0.64	0.93	0.97	0.89	0.92	0.93	0.93	0.66	1.09	0.89	0.95	0.93	0.89
9 <i>muliensis</i>	6.86	11.55	10.63	6.18	11.81	8.36	7.29	6.07		1.00	1.07	0.93	1.00	0.98	0.98	0.50	1.20	1.00	1.05	1.04	0.96
10 <i>nepalensis</i>	12.20	12.05	10.91	12.01	14.01	11.87	11.77	12.16	11.02		1.06	0.90	0.99	1.01	1.02	0.99	1.18	0.80	0.95	1.05	0.96
11 <i>ningshanensis</i>	12.88	11.05	12.15	13.20	15.47	13.58	13.67	12.74	12.62	14.36		1.00	1.06	0.99	1.02	1.09	1.25	0.99	1.04	0.54	1.01
12 <i>nyingchiensis</i>	12.30	12.52	12.15	11.70	10.26	13.47	12.30	12.52	11.40	11.78	14.71		0.91	0.93	0.87	0.92	1.06	0.91	0.93	0.99	0.90
13 <i>occidentalis</i>	11.72	11.35	10.35	11.62	12.38	12.67	10.78	12.46	11.89	11.45	13.59	11.63		0.98	0.92	0.99	1.11	0.98	0.86	1.02	0.90
14 <i>sikimmensis</i>	12.33	11.19	10.52	12.38	13.19	12.83	11.98	12.65	11.93	11.69	13.82	12.26	11.07		0.90	1.01	1.17	0.90	0.98	0.95	1.00
15 <i>spinus</i>	10.72	10.15	11.21	11.22	10.42	11.73	10.77	11.20	10.51	11.04	13.06	10.33	10.02	10.14		0.99	1.19	1.00	1.00	1.00	0.98
16 <i>tuberculatus</i>	7.51	12.07	11.47	6.66	12.11	8.75	7.54	6.78	2.84	11.90	12.85	12.04	12.10	13.00	11.32		1.19	0.97	1.06	1.06	1.01
17 <i>wuguanfui</i>	14.79	16.28	16.31	15.05	14.50	16.06	15.97	15.07	15.47	16.40	17.41	16.02	15.57	16.89	16.19	15.81		1.08	1.22	1.27	1.18
18 <i>kanjiroba</i>	11.72	11.61	10.67	11.67	13.06	11.77	11.19	11.58	11.26	7.25	13.16	12.67	11.98	10.84	11.78	12.06	15.72		0.95	0.97	0.94
19 <i>khumbu</i> sp. nov., nom. subsp.	13.27	11.34	11.24	12.62	12.39	13.87	13.18	13.45	13.00	9.83	13.82	11.96	9.97	11.22	11.17	13.27	15.92	11.02		1.00	0.72
20 <i>feiliangi</i>	12.26	10.84	12.54	12.54	15.15	13.90	13.41	12.02	11.93	14.06	3.75	13.80	12.57	12.86	12.69	12.21	17.68	13.00	12.40		1.04
21 <i>k. makalu</i> subsp. nov.	13.78	11.70	10.73	13.70	12.28	13.59	13.31	13.69	12.72	11.07	13.49	13.28	10.29	11.99	11.82	13.66	16.47	11.10	6.25	13.33	

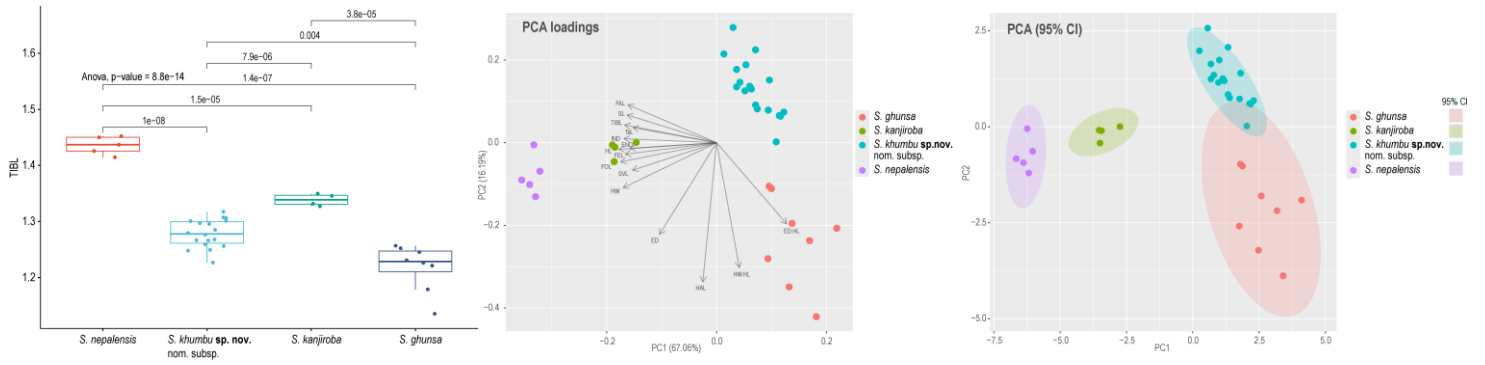
Supplementary file 1F. Uncorrected p-distance (lower diagonal) and standard deviation (upper diagonal) for 16S sequences from phylogenetic analysis of species of the genus *Scutigera* (Anura: Megophryidae). Distances $\leq 2\%$ are indicated by grey-shaded cells. Distances to the newly described species are bold. Nominotypical subspecies = nom. subsp.

	1	2	3	4	5	6	7	8	9	10	11	12	13	14	15
1 <i>bhutanensis</i>		0.99	1.00	0.91	1.12	1.04	1.07	0.94	0.91	1.12	1.04	1.07	0.93	1.04	1.08
2 <i>boulengeri</i>	5.81		0.74	0.64	0.63	0.78	0.18	0.64	0.66	0.74	0.70	0.53	0.62	0.78	0.78
3 <i>chintingensis</i>	5.19	3.97		0.71	0.88	0.74	0.85	0.76	0.58	0.79	0.72	0.77	0.70	0.76	0.92
4 <i>ghunsa</i>	4.02	3.01	2.88		0.83	0.76	0.71	0.69	0.60	0.74	0.71	0.78	0.64	0.76	0.86
5 <i>glandulatus</i>	6.13	3.31	4.33	3.98		0.87	0.70	0.77	0.77	0.82	0.89	0.73	0.76	0.90	0.97
6 <i>luozhaensis</i>	5.42	4.14	2.78	3.29	4.25		0.87	0.83	0.53	0.80	0.80	0.93	0.80	0.84	0.91
7 <i>mammatus</i>	5.66	1.08	4.14	2.67	3.05	4.18		0.72	0.75	0.83	0.80	0.59	0.71	0.85	0.84
8 <i>nepalensis</i>	4.48	3.40	3.57	2.67	3.88	3.78	3.20		0.66	0.76	0.70	0.71	0.56	0.75	0.70
9 <i>nyingchiensis</i>	5.24	4.01	2.78	3.04	4.16	2.39	4.25	3.52		0.62	0.62	0.79	0.59	0.75	0.83
10 <i>occidentalis</i>	6.64	4.13	3.59	3.09	4.02	3.40	4.15	3.78	3.38		0.67	0.83	0.71	0.86	0.91
11 <i>tengchongenchis</i>	4.96	3.69	3.06	2.82	4.49	3.54	3.72	3.00	3.20	2.95		0.77	0.65	0.85	0.82
12 <i>tuberculatus</i>	5.44	2.56	3.58	3.30	3.25	4.79	2.07	3.21	4.53	4.35	3.53		0.73	0.84	0.90
13 <i>kanjiroba</i>	4.59	3.32	3.12	2.39	3.75	3.71	3.15	2.04	3.16	3.17	2.72	3.42		0.62	0.70
14 <i>khumbu</i> sp. nov., nom. subsp.	5.26	4.54	3.49	3.43	4.74	4.12	4.47	3.22	4.14	4.43	4.32	4.15	2.54		0.67
15 <i>k. makalu</i> subsp. nov.	5.34	4.26	4.79	3.80	5.36	4.49	4.04	2.71	4.67	4.83	3.80	4.63	2.96	2.46	

Supplementary file 1G. Uncorrected pairwise distance (lower diagonal) and standard deviation (upper diagonal) between COI sequences of the nominotypical subspecies of *Scutigera khumbu* sp. nov. and *Scutigera khumbu makalu* subsp. nov.

	1	2	3	4	5	6	7	8	9	10	11	12	13	14	15	16	17	18	19	20	21	22	23	24
1 <i>khumbu</i> Ne5_2013		0.35	0.28	0.39	0.47	0.50	0.49	0.53	0.53	0.53	0.50	0.56	0.56	0.50	0.50	0.50	0.50	0.50	0.50	1.10	1.10	1.09	1.03	1.09
2 <i>khumbu</i> Ne6_2013	0.90		0.19	0.41	0.48	0.50	0.50	0.54	0.54	0.54	0.52	0.57	0.57	0.52	0.52	0.52	0.52	0.52	0.52	1.06	1.06	1.05	1.00	1.05
3 <i>khumbu</i> Ne7_2013	0.60	0.30		0.36	0.44	0.47	0.46	0.50	0.49	0.50	0.47	0.53	0.53	0.47	0.47	0.47	0.47	0.47	0.47	1.08	1.08	1.07	1.02	1.07
4 <i>khumbu</i> Ne8_2013	1.20	1.20	0.90		0.53	0.56	0.56	0.60	0.60	0.60	0.58	0.62	0.62	0.58	0.58	0.58	0.58	0.58	0.58	1.11	1.11	1.10	1.04	1.10
5 <i>khumbu</i> Ne11_2013	1.80	1.80	1.50	2.10		0.14	0.15	0.16	0.17	0.16	0.00	0.21	0.21	0.00	0.00	0.00	0.00	0.00	0.00	1.12	1.12	1.11	1.06	1.11
6 <i>khumbu</i> Ne14_2013	1.95	1.95	1.65	2.25	0.15		0.21	0.23	0.22	0.23	0.16	0.26	0.26	0.16	0.16	0.16	0.16	0.16	0.16	1.12	1.12	1.11	1.06	1.11
7 <i>khumbu</i> Ne15_2013	1.95	1.95	1.65	2.25	0.15	0.30		0.23	0.24	0.23	0.17	0.27	0.27	0.17	0.17	0.17	0.17	0.17	0.17	1.11	1.10	1.10	1.04	1.10
8 <i>khumbu</i> 9705.11	1.87	1.87	1.53	2.22	0.17	0.34	0.34		0.24	0.00	0.16	0.27	0.27	0.16	0.16	0.16	0.16	0.16	0.16	1.11	1.11	1.11	1.11	1.11
9 <i>khumbu</i> 9705.21	1.87	1.87	1.53	2.22	0.17	0.34	0.34	0.34		0.24	0.17	0.28	0.28	0.17	0.17	0.17	0.17	0.17	0.17	1.13	1.12	1.12	1.12	1.12
10 <i>khumbu</i> 9705.22	1.87	1.87	1.53	2.22	0.17	0.34	0.34	0.00	0.34		0.16	0.27	0.27	0.16	0.16	0.16	0.16	0.16	0.16	1.11	1.11	1.11	1.11	1.11
11 <i>khumbu</i> 9705.74	1.70	1.70	1.36	2.04	0.00	0.17	0.17	0.17	0.17	0.17		0.21	0.21	0.00	0.00	0.00	0.00	0.00	0.00	1.11	1.11	1.11	1.11	1.11
12 <i>khumbu</i> 104174	2.04	2.04	1.70	2.39	0.34	0.51	0.51	0.51	0.51	0.51	0.34		0.00	0.21	0.21	0.21	0.21	0.21	0.21	1.14	1.13	1.13	1.13	1.13
13 <i>khumbu</i> 9705.83	2.04	2.04	1.70	2.39	0.34	0.51	0.51	0.51	0.51	0.51	0.34	0.00		0.21	0.21	0.21	0.21	0.21	0.21	1.14	1.13	1.13	1.13	1.13
14 <i>khumbu</i> 9705.85	1.70	1.70	1.36	2.04	0.00	0.17	0.17	0.17	0.17	0.17	0.00	0.34	0.34		0.00	0.00	0.00	0.00	0.00	1.11	1.11	1.11	1.11	1.11
15 <i>khumbu</i> 9705.88	1.70	1.70	1.36	2.04	0.00	0.17	0.17	0.17	0.17	0.17	0.00	0.34	0.34	0.00		0.00	0.00	0.00	0.00	1.11	1.11	1.11	1.11	1.11
16 <i>khumbu</i> 9705.89	1.70	1.70	1.36	2.04	0.00	0.17	0.17	0.17	0.17	0.17	0.00	0.34	0.34	0.00	0.00		0.00	0.00	0.00	1.11	1.11	1.11	1.11	1.11
17 <i>khumbu</i> 9705.90	1.70	1.70	1.36	2.04	0.00	0.17	0.17	0.17	0.17	0.17	0.00	0.34	0.34	0.00	0.00	0.00		0.00	0.00	1.11	1.11	1.11	1.11	1.11
18 <i>khumbu</i> 9705.99	1.70	1.70	1.36	2.04	0.00	0.17	0.17	0.17	0.17	0.17	0.00	0.34	0.34	0.00	0.00	0.00	0.00		0.00	1.11	1.11	1.11	1.11	1.11
19 <i>khumbu</i> 9705.100	1.70	1.70	1.36	2.04	0.00	0.17	0.17	0.17	0.17	0.17	0.00	0.34	0.34	0.00	0.00	0.00	0.00	0.00		1.11	1.11	1.11	1.11	1.11
20 <i>makalu</i> JS1405.14	8.47	8.47	8.80	8.47	8.80	8.80	8.63	8.52	8.69	8.52	8.52	8.52	8.52	8.52	8.52	8.52	8.52	8.52	8.52		0.28	0.16	0.16	0.16
21 <i>makalu</i> JS1405.24	8.96	8.96	9.28	8.96	9.28	9.28	9.12	9.03	9.20	9.03	9.03	9.03	9.03	9.03	9.03	9.03	9.03	9.03	9.03	0.49		0.22	0.22	0.22
22 <i>makalu</i> JS1405.25	8.63	8.63	8.96	8.63	8.96	8.96	8.80	8.69	8.86	8.69	8.69	8.69	8.69	8.69	8.69	8.69	8.69	8.69	8.69	0.16	0.33		0.00	0.00
23 <i>makalu</i> JS1405.27	8.53	8.53	8.83	8.53	8.83	8.83	8.68	8.69	8.86	8.69	8.69	8.69	8.69	8.69	8.69	8.69	8.69	8.69	8.69	0.16	0.33	0.00		0.00
24 <i>makalu</i> JS1405.28	8.63	8.63	8.96	8.63	8.96	8.96	8.80	8.69	8.86	8.69	8.69	8.69	8.69	8.69	8.69	8.69	8.69	8.69	8.69	0.16	0.33	0.00	0.00	





Supplementary file 1J. Graphic representation of results of the one-way ANOVA and PCA in the nominotypical subspecies (nom. subsp.) of *Scutigera khumbu sp. nov.* (n=18) for SVL, ratios, and the normalized morphometric characters and pairwise comparison between groups. SVL: Snout-vent length (raw data); HL: head length; HW: head width; ratio HW/HL; SL: snout length; ED: horizontal diameter of eye; ratio ED/HL; END: eyelid-naris distance; IND: internarial distance; FAL: forearm length; FEL: femur (thigh) length; FOL: foot length; HAL: hand length; TaL: length of tarsus; TIBL: tibia (shank) length.

Supplementary file 1K. Morphological data for adults and labial tooth row formula of tadpoles of *Scutigera khumbu* sp. nov. compared with congeneric species (table modified from Hofmann et al. 2024); all measurements in mm. SVL: Snout-vent length; HL: head length; HW: head width; SL: snout length; IND: internarial distance; HAL: hand length; 1: relative length of fingers; 2: relative length of toes; 3: subarticular tubercles present (1)/absent (0); 4: vocal sac present (1)/absent (0); 5: vomerine/maxillary dentation present (1) or absent (0); 6: tympanum present (1)/absent (0); 7: webbing toes (rud.=rudimentary); 8: finger(s) with nuptial spines (males); 9: pectoral/axillary glands (males); 10: gland size (p, ax); 11: spines on p/ax present (1) or absent (0); 12: spines on (inner) (fore)arms present (1)/absent (0); 13: belly with (1) or without (0) spines; 14: tubercles/warts on dorsal (and lateral) surfaces of body and/or limbs present (1) or absent (0); 15: dorsal tubercles with (1) or without (0) black spines in breeding condition (males).

data source (the 1st represents the original description)	Scutigera	SVL ♂	SVL ♀	HL	HW	SL	IND	HAL	1	2	3	4	5	6	7	8	9	10	11	12	13	14	15	LTRF tadpole	Alt (m)		
This study	<i>khumbu</i> sp. nov.	41.6-51.1 (n=16)	49.4-55.6 (n=4)	11.4-13.9	14.0-16.5	5.6-7.1	3.7-5.1	9.6-12.3	I<I<IV<III	I<I<V<III<IV	0	0	0/0	0	rudimentary	I,II,III	2/2	p>>ax	1/1	0	0	1	1 (♀ dorsolateral)	1:(2-3)+(2-3)/(2-3)+(2-3):1 or 1.2+2/3+3	2800-3900		
(Dubois, 1979)	<i>adungensis</i>	71.0-73.0 (n=2)			24-24.5		5.0-6.0		I<I<IV<III		0	1	0/1	0	rudimentary	I,II	2/0			1/0	0	0	0	0	0	3650	
(Rao, 2022 "2020")	<i>bangdaensis</i>	45.5-50.0 (n=2)	48-49.5 (n=2)											0	developed	I,II,III	2/2	p>ax	1/1		0	1	0	0			
(Delorme and Dubois, 2001)	<i>bhutanensis</i>	53.0-53.4 (n=2)		18.1	18.9	12.8	4.6	12.8	I<I<IV<III	I<I<III=V<IV	0 or 1	0	0/0	0	0, rud., or weak	I,II	2/2	p=ax	1/1		na	1	1	1	1		
(Rao, 2022 "2020")	<i>biluensis</i>	73.0 (n=1)	53.5 (n=1), sa										1	0	rudimentary	I,II	2/2			1/1	1	0			3800		
(Bedriaga, 1898); data partly from (Fei et al., 2009; Fei et al., 2012)	<i>boulengeri</i>	44.9-53.7 (n=20)	40.2-58.2 (n=8)						I<I<IV<III			0	0/0 or 1	0	developed	I,II,III	2/2	p=ax	1/1		1	1	1	1	1.6+6/6+6:1	3850	
(Liu, 1950)	<i>brevipes</i>	68.0-80.0 (n=10)	58.0-68.0 (n=9)	23.0	24.0				I<I<IV<III		0 (indistinct)	0	0/0	0	developed	I,II	2/2	p>>ax	0/0		0	1			1.4+4/5+5:1	3500	
Liu and Hu, 1960; data partly from (Fei et al., 2009)	<i>chintangensis</i>	42.0-42.4 (n=3)	48.0-52.8 (n=6)	13.6-16.0	14.2-16.0	5.0-6.0	4.0-4.8	11.0-13.0	I<I<IV<III		0 (indistinct)	0	0/1	0	developed (large or reduced)	I,II,III	2/2	p>ax	1	1	0	1			1.3+3/2+2:1	3050	
(Zhou et al., 2023)	<i>feiliangi</i>	45.7-50.2 (n=6)	48.9-51.5 (n=3)	13.6-17.6	15.3-20.0	5.8-6.8	3.3-4.1		I<I<IV<III	I<I<V<III<IV	0	0	na/1	"indistinct"	rudimentary	I,II,III	2/2 (♂♀)	p>ax	1/1 (♂♀)	1	0 (1 in ♀)	1	1	1	1.5+5/5+5:1	1882	
(Khatiwada et al., 2019)	<i>ghunsa</i>	42.0-47.8 (n=5)	50.2-53.9 (n=5)	10.1-13.3	14.4-18.0	4.7-6.2	3.5-4.9	19.9-25.1	I<I<IV<III	I<I<III=V<IV	0	0	0/0	1 (hidden)	0		I,II,III	2/2	p>>ax	1/1		0	1	1	1.2+2/2+2:1	3457	
(Liu, 1950)	<i>glandulatus</i>	67.0-81.0 (n=2)	77.0-81.0 (n=2)	28.0-26.0	28.5-28.0				I<I<IV<III	I<I<III=V<IV	1	0	0/0	0	developed	I,II	2/2	p>>ax	1/0		0	1			1:(3-4)+(3-4)/(4-5)+(4-5):1	2290-2740	
(Yang et al., 1979); data from (Jiang et al., 2016)	<i>gongshanensis</i>	47.0-57.0 (n=19)	49.0-60.5 (n=2)						I<I<IV<III		0	1	0/1	0	0		I,II	2/0		1		0	1	0	1.3+3/3+3:1	2750	
(Fei et al., 1995); data from (Fei et al., 2012; Jiang et al., 2016)	<i>jiulongensis</i>	67.4-81.5 (n=20)									1	0	na/0	0	weak	I,II	2/2	p>>ax	1/1		0	1			1.3+3/4+4(3+3):1	3210	
(Hofmann et al., 2024)	<i>kanjiroba</i>	55.4 (n=1)	54.2-66.7 (n=3)	14.5-19.1	18.2-23.2	7.9-9.6	5.6-6.8	13.0-16.5	I<I<IV<III	I<I<V<III<IV	0	0	0/0	0	rudimentary	I,II,III	2/2	p=ax	1/1	0	0	1	1	1	1.2+2/2+2:1	3000-4400	
(Huang, 1985)	<i>liupanensis</i>	40.6-48.0 (n=20)	52.0-59.5 (n=3)	12.8-16.3	13.6-17.8	5.1-6.5	3.5-5.0	11.0-15.9	I<I<IV<III	I<I<III=V<IV		0	na/1	0	developed	I,II,III	2/2	p=ax	1/1		1	1	1	1	1.6+6 (5+5)/6+6 (5+5) (7+7):1	2100	
(Shi et al., 2023)	<i>luozhaensis</i>	47.0-57.9 (n=19)	49.8-66.2 (n=8)	15.4-18.8	16.4-23.3	6.3-8.2	4.2-6.3	11.6-16.8				0	0/0 (or indistinct)	0	rudimentary	I,II,III	2/2	p>ax	1/1	0	0	1	1	1	1.3+3/3+3 (2+2):1	4150	
(Liu, 1950); data partly from (Fei et al., 2009)	<i>maculatus</i>	49 (n=1)		16.0	17.0			13.0	I<I<IV<III		1	0	0/0 or 1	0	developed	I,II,III	2/2	p>ax	1/1		0	1				3353	
(Günther, 1896); data from (Dubois, 1979; Liu, 1950)	<i>mammatus</i>	58.8-71.7 (n=11)	63.0-77.3 (n=6)						I<I<IV<III		1 (or very indistinct)	0	0/0 or 1	0	developed (large or reduced)	I,II	2/2 or 2/0	p>ax or p	1/0 or 0/0		0					1.5+5/5+5:1	
(Rao, 2022 "2020")	<i>meiliensis</i>	70.0 (n=1)	65.0 (n=1)										1	0	rudimentary	I,II	2/2			1/1	0	0				3800	
(Fei and Ye, 1986); data partly from (Fei et al., 2009)	<i>muliensis</i>	68.2-80.0 (n=10)	60.1-67.5 (n=10)						I<I<IV<III	I<I<III=V<IV		0	0/0	0	rudimentary	I,II	2	p or ax?		1		0			1.4+4/4+4 (5+5):1	3200	
(Dubois, 1974 "1973") (Dubois, 1978)	<i>nepalensis</i>	68.0-73.5 (n=4)	59.5-74.5 (n=4)						I<I<IV<III	I<I<V<III<IV	0	0	na	0	0 or rudimentary	I,II,III	2/2	p=ax or p>ax	1/1		0	1	1	1			
(Fang, 1985); data partly from (Fei et al., 2012; Jiang et al., 2016)	<i>ningshanensis</i>		41.0 (n=1)	14.0	15.0	5.0	3.2					0	na/1	"not visible"	weak	I,II,III	2/2	p=ax			1				1.5+5/5+5:1	2550	
(Fei, 1977); data partly from (Fei et al., 2009)	<i>nyingchiensis</i>	52.8-67.6 (n=5)	70.0 (n=1)						I<I<IV<III			0	0/1	0	developed	I,II,III	2/2	p>ax	1/1		0	1	1	1	1.4+4 (3+3)/4+4:1	3040	
(Dubois, 1978)	<i>occidentalis</i>	52.0-71.5 (n=63)	58.5-73.0 (n=12)	23.5	24.5				I<I<IV<III	I<I<III<V<IV	0		0/0	0	developed	I,II,III	2/2	p>ax	1/1	1	0	1	1	1 (also breeding ♀)	1.4+4 (3+3)/4+4 (3+3):1	2680-3900	
(Liu et al., 1978); data partly from (Fei et al., 2012; Jiang et al., 2016)	<i>pingwuensis</i>	60.7-75.8 (n=20)									0	0	na/0	0	weak	I,II,III	2/2	p>>ax		1	1				1.2+2/3+3:1	2200	
(Blyth, 1855 "1854"; Boulenger, 1987); data partly from (Fei et al., 2012) and (Che et al., 2020) [<i>S. sikimensis</i> from Yadong]	<i>sikimensis</i>	46.9-51.3 (n=8)	50.8-53.9 (n=2)	16.0-17.5	16.7-19.0	5.7-6.3	4.0-4.8	11.6-14.3	I<I<IV<III	I<I<III<V<IV	0	0	0/0 or 1	0	0, rudimentary, or weak; well-developed in Che et al. 2020	I,II,III	2/2	p>ax	1/1		0	1	0	0 (or 1; Fei et al. 2009)	1.2+2 (or 3+3)/3+3:1	3350	
(Das and Chanda, 2000); ZS19854, p. 71		54.4 (n=1)									0				rudimentary		2/2					1					
(Jiang et al., 2016)	<i>spinosis</i>	50.5-55.6 (n=12)	53.8-57.2 (n=4)	17.4-19.8	17.3-19.8	3.9-7.9	4.0-4.8	13.2-16.1	I<I<IV<III	I<I<V<III<IV	0	0	0/0 or indistinct	0	rudimentary	I,II,III	2/2	p>>ax	1/1	1	0	1	1	1 (♂♀)	2705		
(Yang and Huang, 2019)	<i>tengchongensis</i>	36.0-40.1 (n=7)		12.0-14.0	11.5-13.8	5.1-5.3	3.2-3.4	8.0-9.4	I<I<IV<III	I<I<III=V<IV	0 (indistinct)	0	0/0	0	rudimentary	I,II,III	2/2	p>>ax	1/1	0	0	1	1	1	1.1+2 (2+2)/3+1:1	3000	
(Liu and Fei, 1979); data partly from (Fei et al., 2009)	<i>tuberculatus</i>	68.0-76.0 (n=16)	63.6-79.0 (n=7)						I<I<IV<III		0		na/0	0	rudimentary	I,II	2/2	p>>ax			0	1				1.2+2 (or 3+3)/3+3:1	3000
(Ye and Fei, 2007); data partly from (Fei et al., 2009)	<i>wanglangensis</i>	52.7-58.2 (n=6)	64.3 (n=1)						I<I<IV<III		0		0/1	0	rudimentary or weak	I,II,III	2/2	p>ax			1					2500	
(Jiang et al., 2012)	<i>wuguanfui</i>	77.5-83.8 (n=5)	116.7 (n=1)	28.8-40.3	29.6-47.6	6.0-10.3	6.5-10.1	20-27.8	I<I<IV<III	I<I<III=V<IV	0 (indistinct)	1	0/0	0	weak	I,II,III	2/2	p=ax	1	0	0	1	1	1	1.3+3/3+3:1	2705	



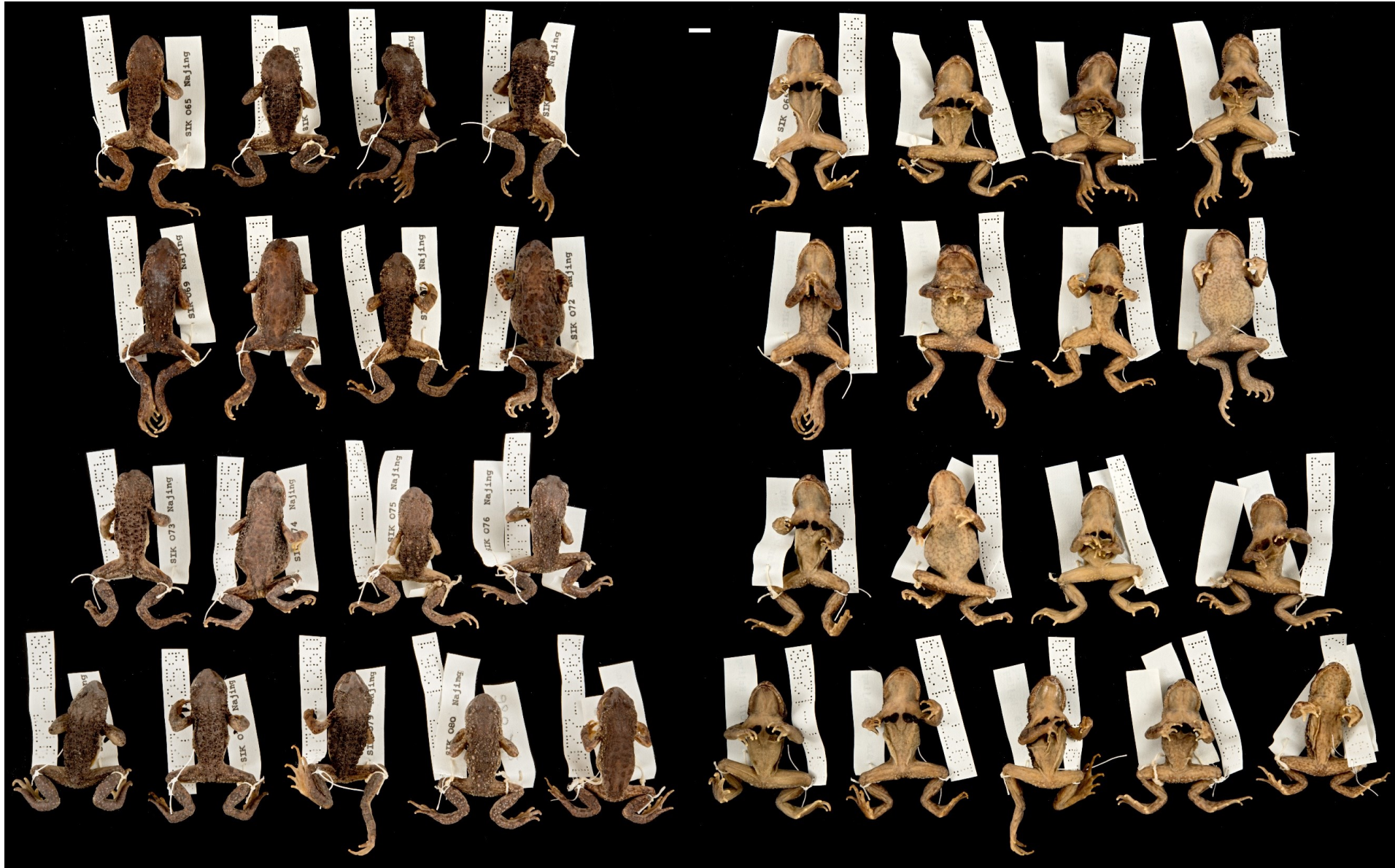
Supplementary file 1L. *Scutigera khumbu* sp. nov., nominotypical subspecies, in life from the holotype locality. A-C: adult males, ventral view; D-F: adult females, ventral view; G: adult male, dorsal view; H: adult male, lateral front; I: adult male, dorso-lateral view; J: intraspecific variation. Photo credits: S. Hofmann.



Supplementary file 1M. *Scutigiger khumbu* **sp. nov.**, nominotypical subspecies, in life from the holotype locality. A: adult males, dorsal view; B: juvenile individual, dorsal view. Photo credits: S. Hofmann.



Supplementary file 1N. Close-up fingers I–III of *Scutigera khumbu* **sp. nov.**, nominotypical subspecies (MNHN1977.1259); photo credit: M. Flecks.



Supplementary file 10. Dorsal and ventral view of the paratype series of *Scutigera khumbu* sp. nov., nominotypical subspecies (MNHN1977.1246–MNHN1977.1262) deposited at the Muséum national d'Histoire naturelle, Paris. The scale bar corresponds to one centimeter. Photo credit: M. Flecks.



Supplementary file 1P. Natural habitat of *Scutigera khumbu* **sp. nov.**, nominotypical subspecies, in the Khumbu Himal region, Nepal. Photo credit: S. Hofmann.

References

- Bedriaga, J.d., 1898. Amphibien und Reptilien. Wissenschaftliche Resultate der von N. M. Przewalski nach Central-Asien unternommenen Reisen, & c./Nauchnuie Rezultatui puteshestvii N. M. Przheval'skagho po tzentral'noi Azii, & c. Volume 3, Zoologischer Theil, Part 1. Akademie der Wissenschaften, St. Petersburg.
- Blyth, E., 1855 "1854". Notices and descriptions of various reptiles, new or little known. Journal of the Asiatic Society of Bengal 23, 287–302.
- Boulenger, G.A., 1987. On a rare Himalayan Toad, *Cophophryne sikkimensis*, Blyth. Annals and Magazine of Natural History, Series 5 20, 405–408.
- Che, J., Jiang, K., Yan, F., Zhang, Y., 2020. Amphibians and Reptiles in Tibet – Diversity and Evolution. Chinese Academy of Sciences. Science Press, Beijing, China.
- Das, I., Chanda, S.K., 2000. A new species of *Scutigera* (Anura: Megophryidae) from Nagaland, north-eastern India. Herpetological Journal London 10, 69–72.
- Delorme, M., Dubois, A., 2001. Une nouvelle espèce de *Scutigera* du Bhutan, et quelques remarques sur la classification subgénérique du genre *Scutigera* (Megophryidae, Leptobrachiinae). Alytes 19, 141–153.
- Dubois, A., 1974 "1973". Diagnoses de trois espèces nouvelles d'amphibiens du Népal. Bulletin de la Société Zoologique de France 98, 495–497.
- Dubois, A., 1978. Une espèce nouvelle de *Scutigera* Theobald 1868 de l'Himalaya occidentale (Anura: Pelobatidae). Senckenbergiana Biologica 59, 163–171.
- Dubois, A., 1979. Une espèce nouvelle de *Scutigera* (Amphibiens, Anoures) du nord de la Birmanie. Revue Suisse de Zoologie 86, 631–640.
- Fang, R.-s., 1985. A new species of *Scutigera* from Shaanxi, China. Acta Herpetologica Sinica. New Series. Chengdu 4, 305–307 [In Chinese with English abstract].
- Fei, L., 1977. A survey of amphibians in Xizang (Tibet). Acta Zoologica Sinica/ Dong wu xue bao. Beijing 23, 54–63.
- Fei, L., Hu, S.-q., Huang, Y.-z., 2009. Fauna Sinica. Amphibia. Volume 2. Anura. Chinese Academy of Science. Science Press, Beijing.
- Fei, L., Jiang, J.-p., Ye, C.-y., Cheng, S.-w., 1995. Electrophoresis analysis of crystalline lens protein of twenty one species (subspecies) of four genera of Pelobatidae. Acta Herpetologica Sinica, Chengdu 4–5, 230–237 [In Chinese with English abstract].
- Fei, L., Ye, C.-y., 1986. A new species of the genus *Scutigera* from Hengduan Mountains (Amphibia: Pelobatidae). Acta Zoologica Sinica/ Dong wu xue bao. Beijing 32, 62–67 [In Chinese with English abstract].
- Fei, L., Ye, C.J., Jiang, J.P., 2012. Colored Atlas of Chinese Amphibians and Their Distributions. Sichuan Science and Technology Press, Sichuan, China.
- Günther, A.C.L.G., 1896. Report on the collections of reptiles, batrachians and fishes made by Messrs Potanin and Berezowski in the Chinese provinces Kansu and Sze-chuen. Annuaire du Musée Zoologique de l'Académie Impériale des Sciences de St. Pétersbourg 1, 199–219.
- Hofmann, S., Jablonski, D., Schmidt, J., 2024. Morphological and molecular data warrant the description of a new species of the genus *Scutigera* (Anura, Megophryidae) from the Central Himalaya. Zookeys 1210, 229–246.
- Huang, Y.-z., 1985. A new species of pelobatid toads (Amphibia: Pelobatidae) from Ningxia Hui Autonomous Region. Acta Biologica Plateau Sinica 4, 77–81.
- Jiang, K., Rao, D.-Q., Yuan, S.-Q., Wang, J.-S., Li, P.-P., Hou, M., Che, M., Che, J., 2012. A new species of the genus *Scutigera* (Anura: Megophryidae) from southeastern Tibet, China. Zootaxa 3388, 29–40.
- Jiang, K., Wang, K., Zou, D.-H., Yan, F., Li, P.-P., Che, J., 2016. A new species of the genus *Scutigera* (Anura: Megophryidae) from Medog of southeastern Tibet, China. Zoological Research 37, 21–30.
- Khatiwada, J.R., Shu, G.C., Subedi, T.R., Wang, B., Ohler, A., Canatella, D.C., Xie, F., Jiang, J.P., 2019. A new species of megophryid frog of the genus *Scutigera* from Kangchenjunga Conservation Area, eastern Nepal. Asian Herpetological Research 10, 139–157.
- Liu, C.-C., 1950. Amphibians of western China. Fieldiana. Zoology Memoires 2, 1–397.
- Liu, C.-c., Fei, L., 1979. Five new pelobatid toads from China. Acta Zootaxonomica Sinica/ Dong wu fen lei xue bao. Beijing 4, 83–92.
- Liu, C.-c., Hu, S.-q., Tian, W.-s., Wu, G.-f., 1978. Four new species of amphibians from Sichuan and Guangxi [In Chinese]. Materials for Herpetological Research. Chengdu 4, 18–19.
- Rao, D., 2022 "2020". Atlas of Wildlife in Southwest China: Amphibian [In Chinese]. In: Zhu, J.-G., Rao, D. (Eds.), Atlas of Wildlife in Southwest China: Amphibian (printed in 2020 but not distributed until 2022). Beijing Publishing Group, Beijing, pp. 1–448.
- Shi, S., Sui, L.-L., Ma, S., Ji, F.-R., Bu-Dian, A.-Y., Jiang, J.-p., 2023. A new Asian lazy toad of the genus *Scutigera* Theobald, 1868 (Anura, Megophryidae) from southern Tibet, China. ZooKeys 1187, 31–62.
- Yang, D.-t., Su, C.-y., Li, S.-m., 1979. New species and new subspecies of amphibians and reptiles from Gaoligong Shan, Yunnan. Acta Zootaxonomica Sinica/ Dong wu fen lei xue bao. Beijing 4, 185–188.
- Yang, J.-h., Huang, X.-y., 2019. A new species of *Scutigera* (Anura: Megophryidae) from the Gaoligongshan Mountain Range, China. Copeia 107, 10–21.
- Ye, C.-y., Fei, L., 2007. A new species of Megophryidae—*Scutigera* (*Scutigera*) *wanglangensis* from Sichuan, China (Amphibia, Anura). Herpetologica Sinica/Liang qi pa xing dong wu xue yan jiu 11, 33–37.
- Zhou, S., Guan, P., Shi, J., 2023. A new species of the genus *Scutigera* from eastern Qinling Mountains (Anura: Megophryidae) [In Chinese with English abstract]. Chinese Journal of Zoology 58, 641–650.